

A) Above Counter

B) Under Sink

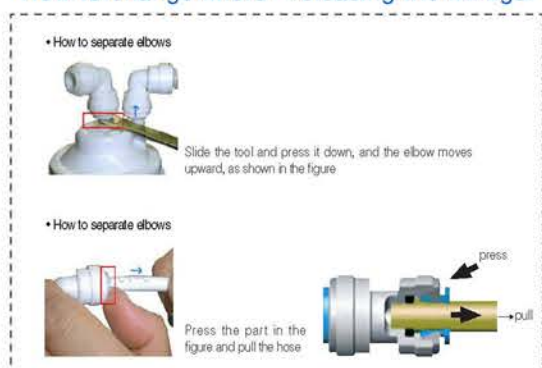
**INSTALLING ABOVE COUNTER UNITS:**

- 1) Unscrew the existing faucet end.
- 2) Replace it with the supplied diverter.
- 3) Tighten the adapter on the end of the sink faucet so that the hose nipple points toward the rear of the sink.
- 4) Unscrew the nut on the 1/4-inch hose adapter and slide the nut onto the end of the included hose.
- 5) Press the hose tightly onto the silver nipple on the diverter and slide the locking nut to the end and tighten it securely.
- 6) Position the filter unit where desired and open the case by pressing the release tabs on both sides. (Note: you can wall mount the filter unit or simply sit it on the counter)
- 7) Guide the hose into the circular opening on the side of the filter case. You might want to cut off any excess hose. Then press the end of the hose into the available plastic elbow by the sediment filter.
- 8) Be sure to press the hose into the opening on the elbow approximately 1/2-inch.
- 9) Turn on the cold water at the faucet and activate the diverter valve.
- 10) Turn on the valve at the flexible hose and check for leaks. If leaking at any connection, simply tighten that connection or press the tubing further inside the plastic elbow.
- 11) Let the water run for a full minute to clear the carbon dust from the system. It is normal for the water to be discolored until you have cleared the filters.
- 12) Carefully replace the cover.

**INSTALLING UNDER COUNTER UNITS:**

- 1) Locate the position for the filter unit. You may want to fasten it to a wall.
- 2) Turn off your main water supply.
- 3) Unscrew the valve on the cold water pipe and affix the adapter directly to the pipe.
- 4) Refasten the valve onto the threaded end of the adapter.
- 5) Unscrew the nut on the 1/4-inch hose adapter and slide the nut onto the end of the included hose.
- 6) Press the hose tightly onto the silver nipple on the diverter and slide the locking nut to the end and tighten it securely.
- 7) Guide the hose into the circular opening on the side of the filter case. Cut off any excess hose. Then press the end of the hose into the available plastic elbow by the sediment filter.
- 8) Position the supplied water faucet onto one of the knock out plugs on your kitchen sink or drill a hole in your counter top near the edge of the sink. Tighten the nuts to secure this new faucet.
- 9) Press the 1/4-inch supply tube into the fitting on the end of the faucet and secure the opposite end into the hole on the top of the filter unit.
- 10) Turn on the valve at the adapter unit and then turn on the new faucet valve. Check for leaks.
- 11) If leaking at any connection, simply tighten that connection or press the tubing further inside the plastic elbow.
- 12) Let the water run for a full minute to clear the carbon dust from the system. It is normal for the water to be discolored until you have cleared the filters.

**How to change filters - releasing the fittings:**



**Precautions:**

- 1) Do not use this water for fish.
- 2) Do not preserve the alkaline water for more than 1 day.